

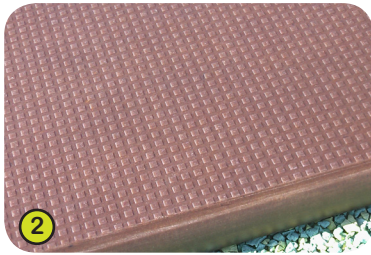


Diabolo - J38110

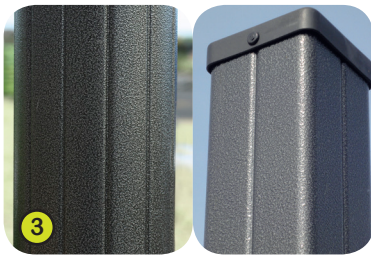
Technical specification



1- **The coloured panels** are made with a compact material 13mm thick. It is made up of 70% of softwood fibres and 30% of thermosetting resin, and it stands up to weathering very well (sun, rain, damp, etc.). The coloured surfaces are treated with products based on coloured acrylic polyurethane resins; this enables them to stand up well to UV radiation and resist damage.



2- **The platforms and the climbing walls** are made from a 12.5mm thick, textured, non-slip compact material (HPL).



3- **The 95mm square posts and the 125mm diameter posts** are made of painted steel, ensuring robustness and durability.



4- **The tubes** are made of stainless steel, diameter 40mm, thickness 2mm, ensuring robustness and durability.

5- **The ropes** are made of galvanised steel cable covered with polyester. **The cables** are held in place and linked by injected polyamide spheres.

6- **The slide slope** is made of 304 stainless steel 2mm thick, shaped, bent and rolled in one piece.



7- **The climbing holds** are made of polypropylene. They are non-toxic, non-flammable and shock and UV resistant.

8- **The stainless steel fixings** are protected by polyamide anti-vandalism caps.

