



*Proludic*<sup>®</sup>

Committed to sustainable development







# Proludic is an ethical, responsible company

Proludic is a holder of both ISO 9001 and ISO 14001 certifications, demonstrating its commitment to a sustainable development. The company's strategy seeks to successfully combine social, economic and ecological requirements.



## Independent assessment of corporate policy

Proludic has provided further proof of its commitment to sustainable development by undertaking an independent assessment using the AFAQ 26000 evaluation tool. AFAQ 26000 was developed by AFNOR, the leading French certifying body and one of the most important companies in the world in its field. The assessment, which is **based on the international standard ISO 26000**, measures the relevance and the maturity of the social responsibility policies in place within the company.

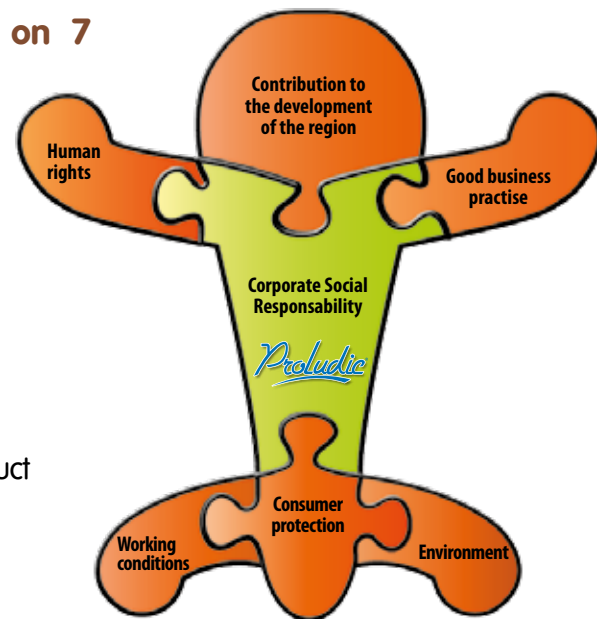
This undertaking is an innovative procedure in France, and Proludic is the only play and sports equipment manufacturer to have been evaluated.

**In 2014, Proludic extended this evaluation to its subsidiaries, and obtained the «Progression» level, which represents the second level out of the four included in the evaluation.**



### The audit of Proludic's organisation was based on 7 factors:

- vision of Corporate Social Responsibility and governance
- human rights
- HR, working conditions and relationships
- environmental practices
- business practices
- production methods, promotion of sustainability in terms of product usage and its end of life disposal, customer protection
- contribution to the local region



### The maturity of Proludic in these areas was measured using two main criteria:



The desire of Proludic to listen to the requirements of all concerned parties in these seven areas

The ability to consider all of these factors in decision making processes

The quality of the relationships between Proludic, its clients and the end users was highlighted in the assessment as being of a particularly high level.

The report that was produced following the assessment process is now a clear guide for Proludic. It has identified strengths, weaknesses and areas for improvement that are directly linked to our business and the market in which we work.

**This assessment identifies Proludic as being a suitable partner for those private and public organisations who subscribe to a sustainable procurement policy that takes both social and environmental factors into account in purchasing decisions.**

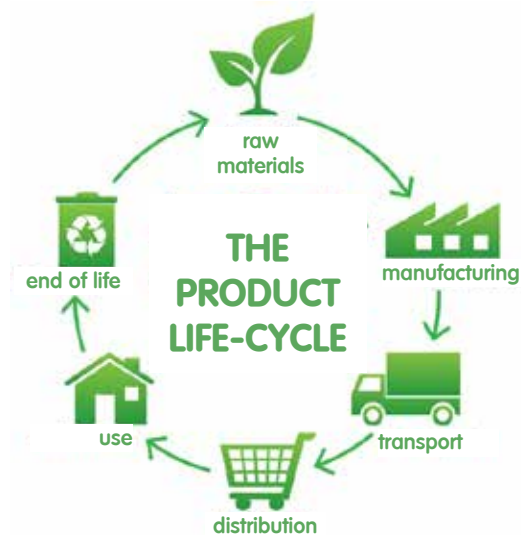


## An effective environmental policy

**Proludic has put in place an active strategy to reduce its impact on the environment that contains a series of ambitious, but achievable targets.**



**This strategy includes minimising the consumption of resources at all stages of the production process as well as the management of waste within the factory and during the playground installations.**



The use of impact management tools such as a **Carbon Audit®**, **Energy Audit** and **Product Audits®** have allowed Proludic to identify areas for improvement in its **environmental practices** and to **put in place appropriate action plans**.

Key objectives include reducing the consumption of energy, reducing the use of chemicals, reducing the production of industrial waste, and maximising the use of waste products.

All of these actions are designed to reduce the company's ecological footprint. They are carried out on a daily basis within the company, are tracked by the management team and are communicated to all employees.

**The Proludic environmental policy has been certified to ISO 14001 since 2005.**

ISO 14001

**BUREAU VERITAS**  
Certification





# Proludic and the choice of durable materials designed to have the minimum environmental impact



**Proludic is certified PEFC since March 2<sup>nd</sup> 2015.**

**The company is now part of the 3 000 French companies which are members of the system and are committed to contribute to the sustainable management of forests.**

The PEFC priority is to produce wood while maintaining the sustainability of forest resources as well as its biodiversity.

To guarantee the sustainable origin of the wood or wood-based product, all the actors of the manufacturing chain (from the forest to the end product) must be PEFC certified.

*Each year, the deforestation and the poor management of natural resources destroy around 13 million hectares of forest in the world, out of the 4 billion that cover our planet.*



**To prove its certification, the company must provide its valid PEFC control chain certificate to the public body issuing the tender. The company must also be included in the French PEFC France database of certified companies:**

**<http://www.pefc-france.org/rubrique> «qui est certifié»**

## The regulation:

Since 2010, the government objective is to ensure 100% of the wood purchased is certified or sourced from eco-managed forests.

*Extract from the April 5<sup>th</sup> 2005 circular appendix concerning the conditions for public markets in the wood or derived products sector, for promoting eco-managed forests:*

*III - Awarding of the contract*

*A - Verification of the product sourcing*

*In order to allow services to control the origin of the wood used for a public contract, a clause in the tender specifies that during the contract and warranty period, the holder commits to provide on express request from the administration, the proof that the products used meet the specifications concerning the eco-management of forests.*

An independant PEFC France certifying body controls Proludic every year, to check the management of the control chain.

It is now possible to know the percentage of certified wood contained in a Proludic play equipment.

## The control chain





In addition to the PEFC certification, **Proludic uses wood that is native to the local region and European countries, and avoids the use of exotic woods** that are often excessively exploited and that generate extensive pollution during their transportation.



**Proludic avoids the use of heavy metals and toxic products** such as copper, lead, mercury and chrome.



**Proludic colours its pannels using water-based paints and pigmented resins that are lead-free.**

As part of an on-going strategy to optimise its painting process, **Proludic has reduced its CFC discharge levels by 90% in the past 10 years**, with results that are inferior to the regulations in force.





## Proludic uses materials that are 100% recyclable

### METAL

Steel, stainless-steel and aluminium are **100% recyclable** (steelworks and refinery plants...)

### COMPACT

Compact is **100% recyclable** (energy production...)

### PLASTIC

All our plastic parts are marked with standard international abbreviations which ensure their **identification** and **traceability**, allowing for a suitable and **100% recycling** (reused in the plastic processing industry...)

### WOOD

The plywood and laminated wood are **100% recyclable** (chipboard and laminate panels...)



These materials have been selected in order to respond to our objective that they can be re-used at the end of their usable life.

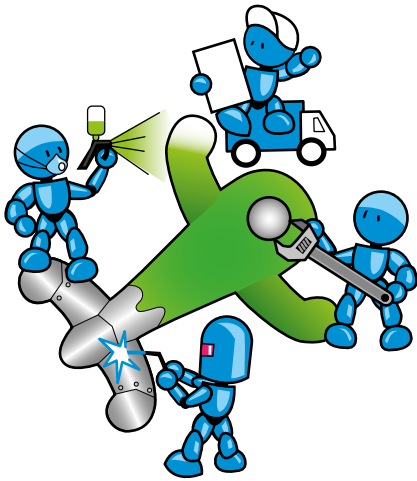
By doing this, Proludic meets the needs of those customers who are seeking materials that are can be recycled and upcycled in line with their own organisation's environmental strategies.



# Measuring the Proludic environmental performance

In order to measure its ecological footprint, the company has conducted a series of studies, a Carbon Audit in 2009, an Energy Audit in 2010 and on-going ADEME Product Audits since 2011.

These 3 types of assessment have been carried out in line with the methods proposed by the ADEME (Agency for the Environment and Energy Consumption), and have allowed the company to study in a precise manner the emissions of greenhouse gases and the energy consumed by the company, as well as the environmental impact of the products during their production and during their end of life disposal.



## Carbon audit®

In 2009, Proludic carried out a **Carbon Audit®** in order to identify the volume and primary sources of the production of greenhouse gases during its operations.

**The results were positive, showing that the level of gases produced was 5 times less than the national average. Proludic has since introduced additional measures to reduce even further the production of greenhouse gases:**

### → OPTIMAL PACKAGING TECHNIQUES

The packaging of Proludic products is optimised in order to reduce the costs of transport and its effect on the environment. Equipment is wrapped in shrink wrap before being placed in containers, meaning that 100% of the inside space of our delivery lorries can be used.

**This measure has reduced the space taken up during transportation by 40%.**



BEFORE

AFTER

### → REDUCTION OF SOLVENT USE

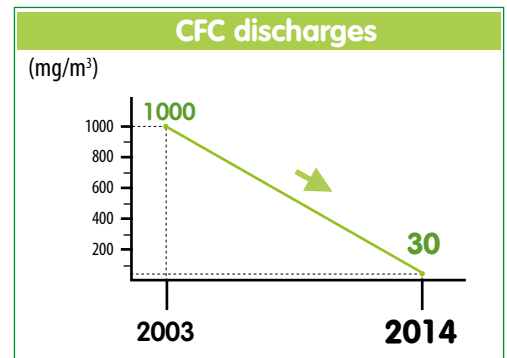
Proludic has taken the decision to eliminate the production of CFCs (volatile organic gases) at source by replacing the majority of the solvents used in the painting process with water-based products.

**The % of solvents used in the painting process has been reduced from 45% to 4%.**

**In the last 11 years the level of CFC discharges within Proludic has been reduced by 97%.**

**Proludic is continuing to act, with the objective of eliminating completely the discharge of CFC gases.**

The reduction of CFC gases within the factory is also in line with the continued Proludic strategy of improving working conditions.





➔ **USE OF VIDEO-CONFERENCING**

Video-conferencing technology has been implemented between Proludic and its sales network in order to reduce the number of journeys and as a consequence reduce pollution levels.



➔ **LIMITING OF THE TAX RATING OF COMPANY VEHICLES**

Proludic has chosen to limit the horsepower of company vehicles in order to further minimize CO2 discharges.



**Energy audit**

Proludic has carried out an energy audit on its premises and manufacturing processes in order to better understand energy usage within the company and to identify actions aimed at reducing gas and electricity consumption.



**Electricity**

- ➔ Installation of sensors in order to manage light usage
- ➔ Procurement of more energy efficient machines
- ➔ Installation of state of the art light wells in the factory, to increase natural light levels



**Before**



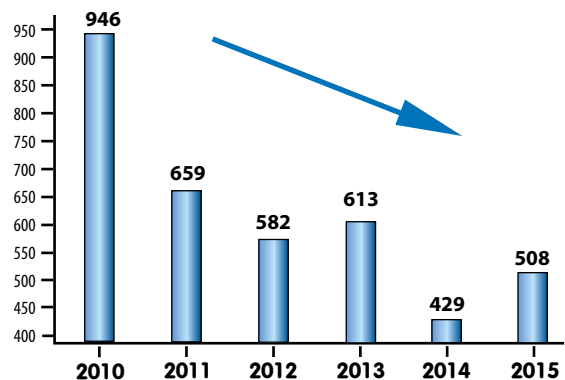
**After**



**Gas**

- ➔ Recovery of heat from the machines to heat the factory
- ➔ Optimising of heating devices
- ➔ Insulation of buildings

**Gas usage (in MW)**



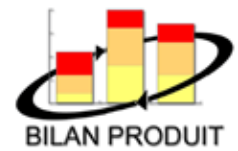
In 5 years the volume of gas consumed has been reduced by 46%



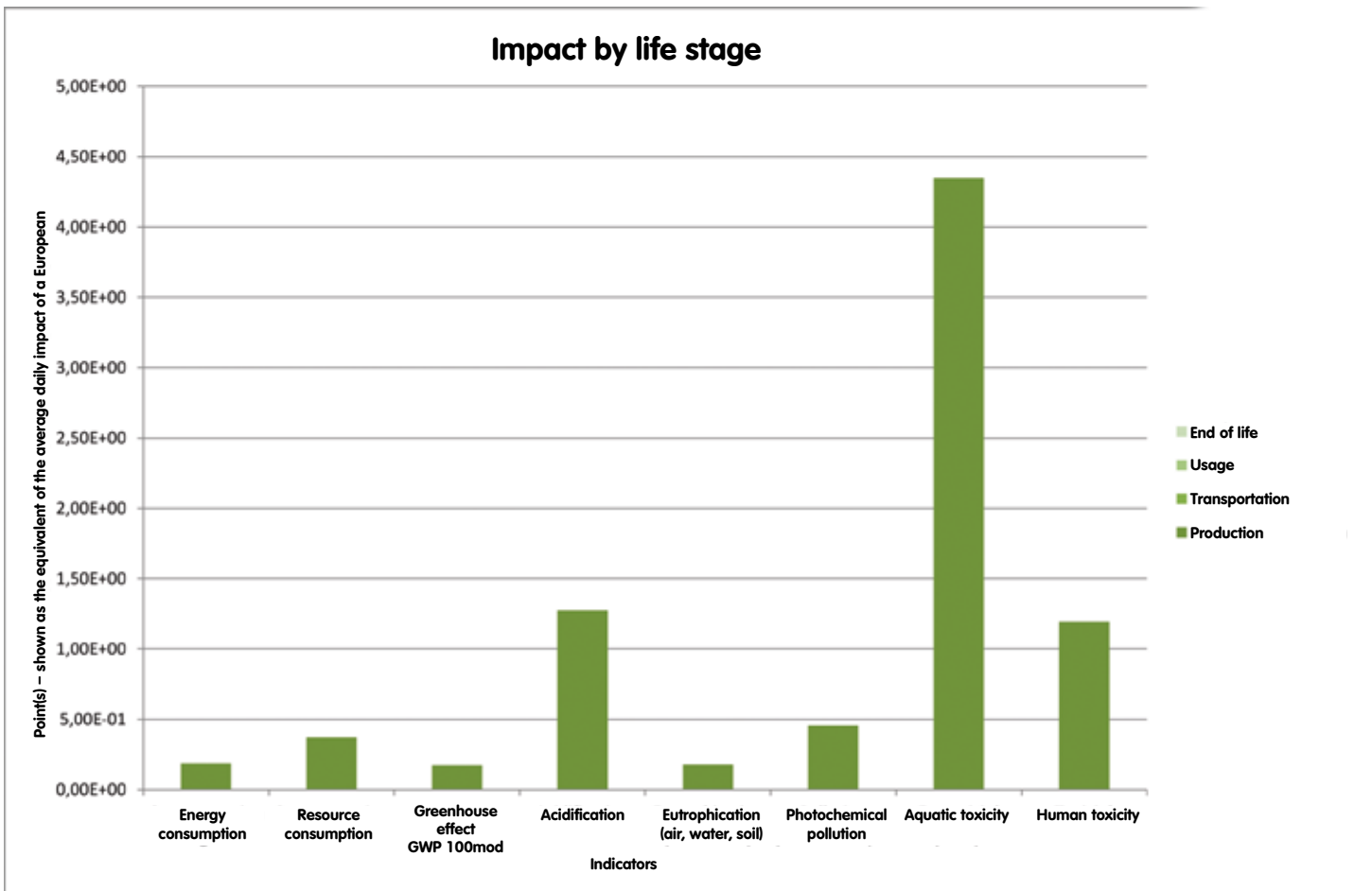
The Product Audits® allow us to quantify the environmental impact of the manufacture of a particular play item by comparing it to the average daily environmental impact of a person in Europe.

It is a multi-faceted tool that includes 8 indicators such as the greenhouse effect, energy consumption, acidification, aquatic toxicity, human toxicity etc.

Proludic has collected data that enables it to provide information on the environmental impact of each product and in **so doing help clients in their decision making process.**



## EXAMPLE OF A PRODUCT AUDIT®





# Proludic, applying optimised waste management processes

The Proludic strategy emphasises the need for best practice in terms of the reduction and recycling of waste products.

These practices apply both to the production plant and the playground installations.



## Reducing waste products at source

→ **The optimisation of product templates** during the manufacturing process has significantly reduced the consumption of raw materials and waste product levels.



### → Installation of a new painting plant in 2012

- The use of solvent has been reduced: **-60%** between 2011 (23 tons) and 2015 (9 tons)
- The quantity of toxic waste associated with the painting process (solvents, aerosol cans, soiled filters...) has been reduced by **53%** between 2011 and 2015, which represents **24 tons less per year**.

### → Using the cardboard boxes:



Everyday Proludic receives parts from our subcontractors, as well as many supplies.

Recycling the packaging and cardboard boxes produces pollution during the transport.

This is why Proludic recycles the cardboards using specific machines: **50 % are re-used by our company** to pack our own boxes.



## Transformation of our waste



### Energy conversion:

**What does it mean?** This consists in using the calorific value of the waste product by burning it and recovering the energy in the form of heat or electricity.

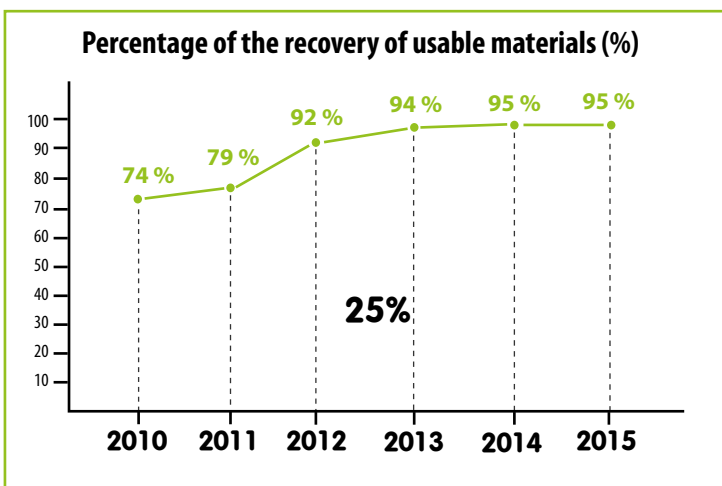
- **Toxic waste** (paint, solvents and dirty material)
- **Wood** (plywood panel offcuts, compact panels, posts offcuts, sawdust from the wood)

### Recovery of usable materials:

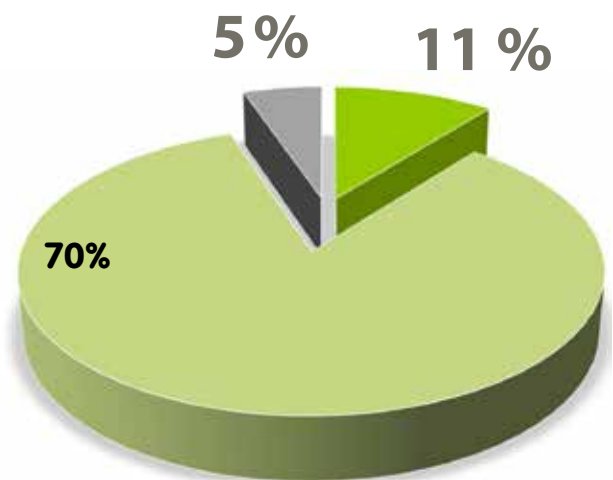
**What does it mean?** They are processes that enable materials to be recovered, reused, transformed and recycled.

- **Solvents** are regenerated using distillation
- **Metals** are used in steelworks and refinery plants
- **Paper** goes to paper mills
- **Plastic film** is re-used in the plastic processing industry
- Plastic cups, cans, batteries and ink cartridges are all recycled

These concrete actions and consistent efforts have resulted in increasingly positive effects:



### What our waste becomes



To reach this objective, the waste is sorted and new recycling actions have been put in place.

■ Recovery of usable materials
 ■ Energy conversion
 ■ Landfill



## Waste management during the installation of playgrounds

The responsible disposal of waste products during the installation of our playgrounds contributes to the constant improvement in our results. As well as undertaking to leave the installation site tidy, Proludic installation teams manage the disposal of waste products in two main ways.

- The waste products are sorted and then taken to a waste processing plant. The receipt from the waste processing plant is then supplied to Proludic.
- The installation teams bring back to Proludic the waste products from the installation that can be recycled directly at the Proludic factory.



## Waste management as part of the procurement strategy

The management of waste products is a major factor that Proludic considers when choosing a printing company.

Proludic only works with **Imprim'Vert** (a French eco-printing standard) registered companies who guarantee the correct disposal of waste that is potentially dangerous for the air, water and soil, who don't use any toxic products and who have put in place measures to ensure the correct storage of potentially dangerous products.

Proludic endeavours to recycle 100% of waste products and is constantly searching new ways to recycle and to reduce the production of waste products.

The best type of waste is one that it is not produced.



Proludic's environmental policy resulted in winning **the 2012 Waste Management Trophy**, a trophy that recognises best practice in the reduction and recycling of waste products.