

Bridgford Park

Destination Park - West Bridgford

Client: Rushcliffe Borough Council

Address: Bidgford Road, West Bridgford, Nottinghamshire, NG2 5GF

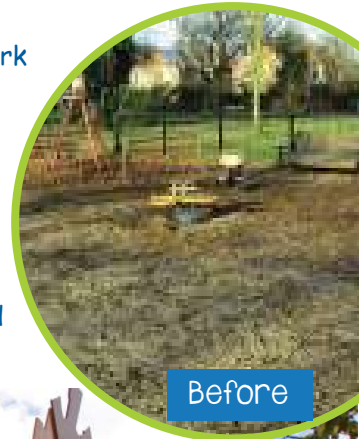
Budget: £120,000

Age Range: Toddlers, Junior & Families

Project Story

Bridgford Park is a space popular with young families, teenager and local people who live and work in the area. However, the existing facility only catered for older children over 10 years and therefore alienated one of the highest demographics - young families - from enjoying this play facility.

The vision from the consultation was to create a destination park with a key focal point and to provide a family friendly area where parents and could let young children play without being intimidated by the older children. Proludic developed this using the Amazone Tower surrounded by a range of traditional play items as well as the Sand Factory.



After



The children had such a wonderful time at Bridgford Park - and you could tell they really benefited from all the different types of play that Proludic have provided. The park was busy with lots of other children as well and it was great to see them interacting with each other. The Sand Factory was a real favourite and I could see them playing together at the various stations and learning how to work in a team.



The Amazon Tower is a really spectacular addition to Bridgford Park and its huge slide was so popular with the kids - it was a struggle getting them off it when it came to go back to school! What really struck me was the range of equipment provided - there was something for all ages and abilities and the fitness equipment around the park provided a scenic way to exercise in the fresh air.

There's a strong focus on the under 5's play provision at the moment and Proludic have accommodated this with their Tiboo Unit and inclusive equipment. They're a fantastic addition to a park that's really boosted the community.

- Sue Curtis, Teacher at Edwalton School





Tiboo MPU



Chickies Springer



Sand Factory



Age Appropriate Play

When looking to design a play area, age consideration is really important. The stages of development at various ages means age-appropriate play is key to a child sense of self, others and their environments.

Age-appropriate play focuses specifically on the developmental ages and the general guidelines for safe, appropriate and stimulating play equipment.